

13 January 2017

The Principal: Te Kopuku High School
C/- Cameron Inder
Bloxam Burnett & Oliver
PO Box 9041
Hamilton 3240
cinder@bbo.co.nz

Dear Sir

Te Kopuku High School – School Travel Plan 2017

Thank you for the submitted 2017 (dated 12.1.17) Travel Plan for Te Kopuku High School, it is now accepted by Hamilton City Council.

There are several ways the City Transport unit of Council can help your school and staff to deliver the plan. We have two staff members, Cameron Ward – Primary School Active Travel Co-ordinator and Mihi Bennett-Smith – Road Safety Co-ordinator, who both work with schools and young people in the areas of road safety.

Their contact details are:

Mihi Bennett-Smith, mihi.bennett-smith@hcc.govt.nz, 07 838 6552

Cameron Ward, Cameron.ward@hcc.govt.nz, 07 838 6957

While Cameron's main focus is primary schools he is a great source of knowledge and ideas on road safety around school gates and he works with schools as a liaison between our safety engineers and parking enforcement team. Mihi is responsible for the Council-facilitated High Schools Road Safety Working Group which includes representatives from the neighbouring councils, NZ Police School Community Officers, Population Health, ACC and SADD (Students Against Dangerous Driving). She is also responsible for our Young Drivers road safety awareness and education programme with focuses on compliance with the graduated licencing system and supporting SADD.

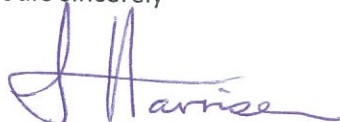
We would also like to draw your attention to the New Zealand Transport Agency resources, particularly around embedding road safety into high school curriculums and the Drive website.

The NZTA Education Portal <http://education.nzta.govt.nz> is an incredibly comprehensive source of information, including curriculum units for road safety, driver licence NCEA credits and the annual Future Transport competition for student teams. They also have some excellent research-based factsheets on road safety guidelines for young people, which I would encourage you to shape your road safety messages to your students. These can be downloaded at <http://education.nzta.govt.nz/guidelines/fact-sheets>.

Cameron and Mihi can also help with supplying your staff with safety gear, including hi-visibility vests. We encourage you to please contact either of them at any time if you have any questions, issues or ideas and they will also ensure you are kept in the loop with any new information from NZTA or Council initiatives which may be of interest to your school and students.

Thank you for your commitment to road safety for your students and we wish you a successful opening.

Yours sincerely



Jason Harrison
Manager City Transportation

Council Building
Garden Place, Hamilton
Phone 07 838 6904 / 021 367 829
Email jason.harrison@hcc.govt.nz
Website www.hamilton.co.nz

Te Kopuku High School Travel Plan 2017

Updated 12/01/17

1.0 BACKGROUND AND PURPOSE

This Travel Plan has been designed to create systems and processes that improve the safety of students travelling to and from Te Kopuku High School (hereafter referred to as the School), located at 70 Foreman Road, Hamilton. This Travel Plan will address the specific issues pertaining to the Foreman Road site and, in particular, the management measures to mitigate the potential adverse safety effects of locating a school in a predominantly industrial area.

This Travel Plan is based on an enrolment cap of 110 students aged 10-15 years. If/when the enrolment exceeds this number or the age of students differs, then this Travel Plan must be revised to reflect any related changes in travel patterns and potential traffic effects.

This Travel Plan shall be updated for each new school year to reflect the modal split of students travelling to the school based on enrolment data. The updated Travel Plan shall be submitted to Hamilton City Council for review in November of the preceding year.

2.0 STRATEGIES

2.1 Education

The School must ensure that staff and students are educated on the importance of safety around the road. It is extremely important that staff members are aware of the importance of supervising students on Foreman Road and the potential adverse consequences of poor road safety practice.

The School shall have a meeting with staff at the beginning of each school year to educate them about the importance of adequately supervising students and how to correctly help students cross the road. It is important that this includes encouraging students to cross the road around the back of buses to avoid students walking in front of the bus and stepping into the path of a vehicle passing the stationary bus.

Once staff have been educated on the importance of road safety, a meeting shall be held with all students from the school to educate them on the importance of road safety and the schools related policies, including

- crossing Foreman Road only with a staff member
- the school having a record of each students normal daily transport arrangements for getting to and from school
- the importance of communication with the school on days where travel arrangements change from the norm
- the importance of entering the school site immediately upon arriving at school, and not parking for drop offs and pick up on the road

The School will create a 'culture of safety' around Foreman Road and ensure that practices are regularly reviewed, and improved when necessary. Any incidents or near-misses shall be reported to senior management of the school, formally recorded on a register and the register reviewed as part of the annual Travel Plan review. Road safety education to students and staff shall be completed at regular intervals throughout the year to reinforce the schools policies on travel to and from the site (all transport modes covered), the safety risks and the appropriate mitigation measures.

This shall form part of the induction process for all new staff and students, including those that start after the beginning of the new school year. It will ensure that all students and staff are well aware of the school's policies on transport and road safety.

2.2 Private Car Parking (Caregiver drop-offs)

From a survey of enrolled students for the 2017 year, it is predicted with 95% confidence that up to 98 students out of 110 could arrive by private car. This could result in up to 89 vehicles arriving before school and leaving after school. The School is providing a charter bus for those students arriving from Ngaruawahia which will reduce the number arriving by private vehicle to a maximum of 58. Once families travelling in the same car are considered this reduces to 48 students. The traffic effects of this will be worst at the end of the school day when most parents/caregivers will want to pick up their children at a similar time.

It shall be School policy that caregivers do not park on Foreman Road for the purpose of student drop-offs or pick-ups, regardless of how short the stay is, or for any other purpose. Instead, the school has provided a total of 49 off-street car parks (adjacent to the front of the building) for all parking requirements other than staff. The School shall ensure that an initial notice to caregivers followed by regular reminders through the year, identifies that the car park area has been provided to maximise the safety of students by removing any need for caregivers to park on Foreman Road to drop off or collect their children.

The School shall actively encourage students to car pool with other students. To facilitate this, the School will keep a car pooling register of student's care-givers who are happy to assist with car-pooling other children that live in the same areas, to and from school.

2.3 Public Transport

From the survey data included in the ITA Addendum Report, it is predicted with 95% confidence that up to 15 students could arrive by public bus. The location of existing enrolments that are planning to travel are shown on the map in **Figure 1** below, together with the Orbiter bus route.

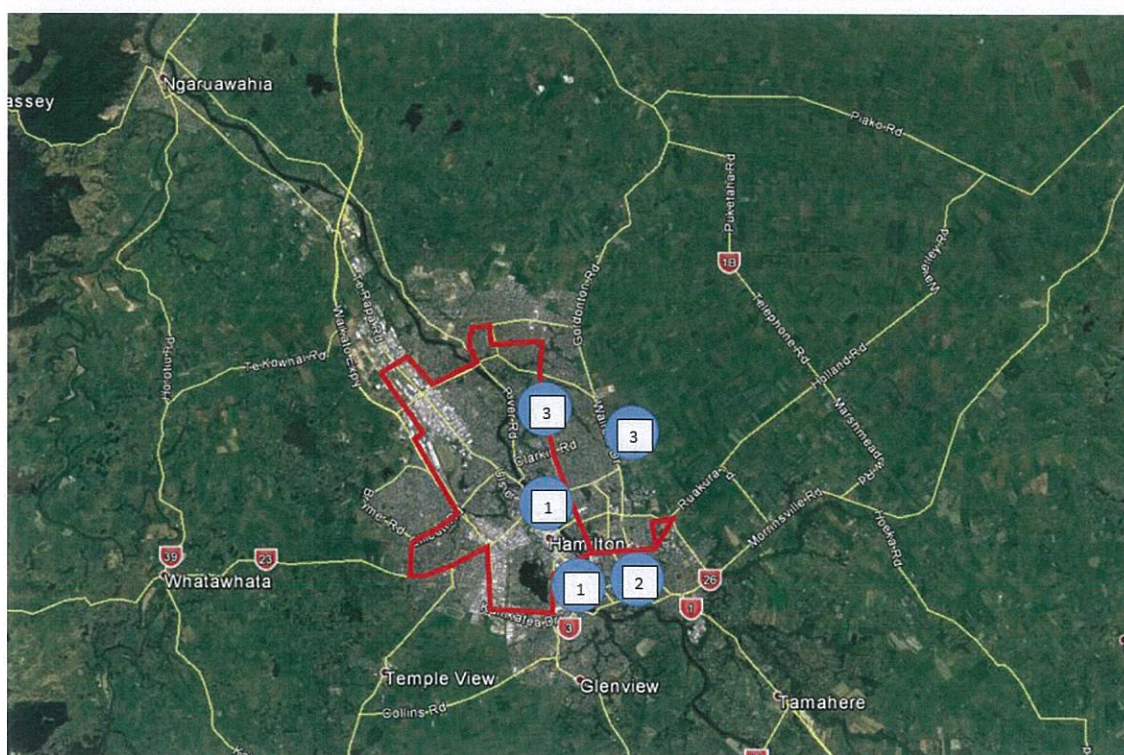


Figure 1: Location of students busing to school. Orbiter bus route shown in red.

Based on the location of the students and bus travel times to the site, the most convenient bus route is listed in Table 1, along with the ages of the students that indicated they will be catching the bus.

Location of students	Number (ages)	Most Convenient Bus to School	Most Convenient Bus from School
Fairview Downs	3 (11,11,12)	Orbiter Anticlockwise	Orbiter Clockwise
Chartwell	3 (11,12,13)	Orbiter Anticlockwise	Orbiter Clockwise
Hillcrest	2 (11,12)	Orbiter Clockwise or Nawton 9	Orbiter Anti-clockwise or Nawton 9
Hamilton East	1 (11)	Orbiter Clockwise or Nawton 9	Orbiter Anti-clockwise or Nawton 9
Fairfield	1 (11)	Orbiter Anticlockwise or Nawton 9	Orbiter Clockwise or Nawton 9

Table 1: Most convenient bus route based on student location

To ensure the safety of students catching public buses, the School shall have a teacher present to supervise students waiting for the bus in the afternoon and to escort students across Foreman Road in the afternoon and morning if they need to reach the bus stop on the opposite side of Foreman Road to the school.

After school this will only require a teacher for a short period, as all students will depart on buses at a similar time. However, in the morning the School will need to ensure that all students disembarking from the bus on the opposite side of Foreman Road have a staff member present to escort them across the road.

The School only opens to students in the morning at 8:30am, so students will not be allowed on site before this time. However, it is expected that most students will arrive closer to the start time of 10am. Even if students were to arrive by bus spread across the entire one and a half hours that the

school is accessible prior to starting, then there are a total nine buses that could arrive on the opposite side of the road and drop off students.

The two bus routes that arrive on the opposite side of the road to the School are the Orbiter Clockwise bus and the Nawton 9 bus. The Nawton 9 has three buses, according to the approximate timetable, that arrive at Tasman Road within one and a half hours of school starting; at 8:38am, 9:13am and 9:43am. The Orbiter Clockwise bus has six bus arrivals; at 8:37am, 8:52am, 9:07am, 9:25am, 9:40am and 9:55am. Bus timetables and routes for the Orbiter and the Nawton 9 are included in Appendix A.

It is required that the School has a staff member present on Foreman Road when each northbound bus arrives to escort the children who arrive on these buses safely across Foreman Road. This staff member will be able to wait in the reception area on rainy days for buses to arrive as the bus stop is visible from the reception area and is close by (approximately 60m) as shown in Figure 2 below. However, the staff member shall ensure that they walk over to the bus stop on the opposite side before the bus arrives to ensure that students are supervised at all times on Foreman Road.

Students arriving by bus shall also be required to go immediately into the School to avoid having students loitering near Foreman Road.

The staff member escorting children across the road must be clearly identifiable, appropriately trained in road safety and shall be wearing a high-visibility vest or jacket.

To further assist with managing students who arrive by bus, the School shall set up a database of students who will be catching the bus to school. Students catching the bus shall inform the School staff of the bus they will typically be catching and the time they will be arriving at school to ensure that a staff member is present to meet those that must cross the road upon alighting from the bus. It is recommended that the school requires as policy that parents and caregivers of students who normally catch the bus, contact the School if they are not attending on a particular day, not catching the bus that day or if their travel arrangements change to avoid staff members waiting to assist students crossing Foreman Road that do not arrive.

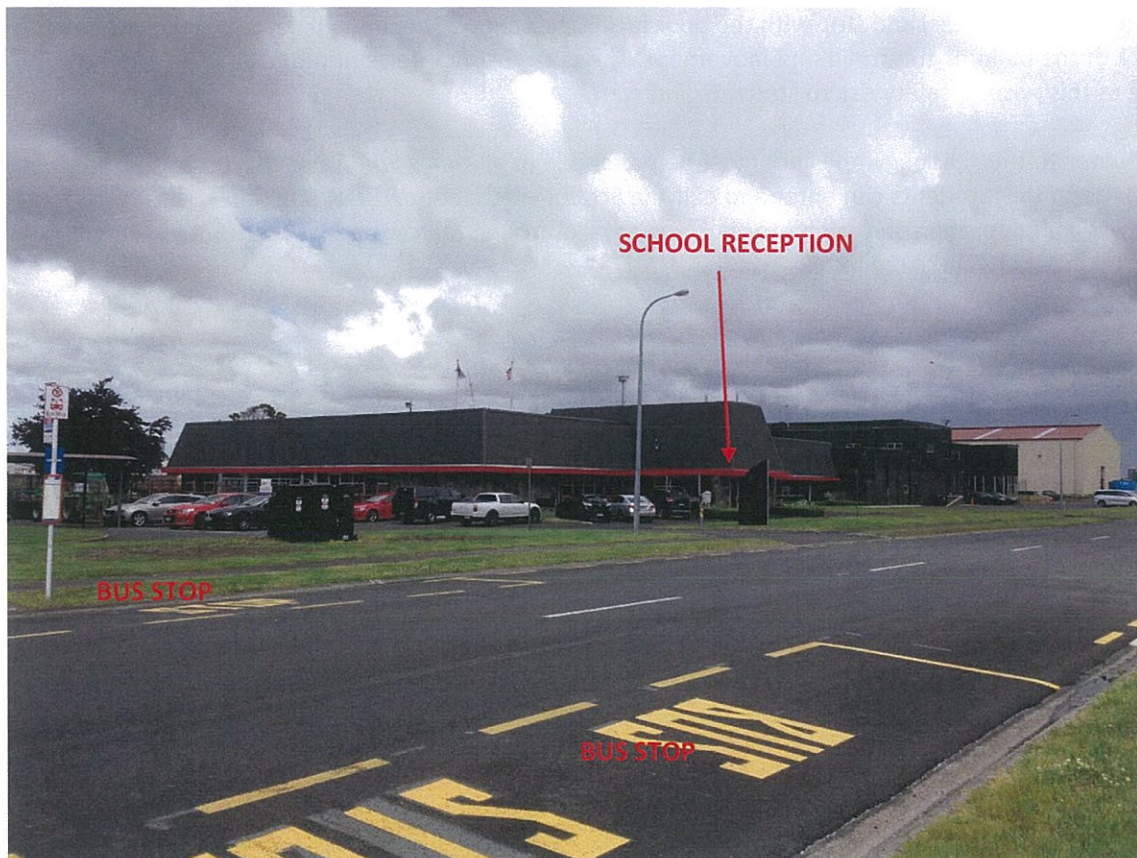


Figure 2: Foreman Road Bus Stop and School Reception Area, looking south towards the school

2.4 Travelling within school hours

If the School staff wish to take students outside of the school site during school hours, students will need to be transported by mini-van or bus to and from the site. Due to the state of the footpath on Foreman Road and the large number of industrial businesses nearby, it is not safe for students to walk, even under the supervision of a teacher.

Mini-vans or buses, must be embarked and disembarked on the school site and not on Foreman Road.

2.5 Walking and Cycling

Walking and cycling shall be discouraged by the school due to the potential adverse safety considerations of having students walking and cycling in an industrial area. The location of the school being approximately 2km from the nearest residential areas will help the School to achieve this, but at the same time, walking and cycling shall also be actively discouraged by school management as a matter of policy.

2.6 Charter Bus

A charter bus service shall be provided to transport students to and from Ngaruawahia.

Students arriving or leaving the School on charter buses shall embark and disembark from within the School site and not from the bus stops on Foreman Road. The bus shall stop at the designated stopping area as shown on drawing 144460_00_401-C. The bus will need to enter the site at Access 3 (the

southernmost access) and stop with the door facing the school. The bus will need to travel around the back of the building to turn in one movement. The bus must not be required to reverse on or off the site as this poses a safety risk to students and staff.

The door to the school gymnasium must be accessible at all times when the charter bus arrives and departs so that students can enter and exit the School via that door. Staff must ensure that students arriving and departing on the charter bus don't walk through the car park at the front of the building to gain access to and from the School.

3.0 ACTIONS TO BE TAKEN BY THE SCHOOL

The following summary of actions shall be taken by Te Kopuku High School in accordance with this Travel Plan.

1. The school shall educate both staff and students at the beginning of each school year on the importance of road safety and how to stay safe in respect of this site, including access to the site, car parking including drop off and pick up zone, pedestrian safety, charter bus circulation route, public bus use and crossing Foreman Road.
2. Road safety education of staff, students and parents shall be completed at the start of each school year and at regular intervals throughout the year to reinforce the schools travel policies and the safety risks and mitigation measures. This shall be completed at a minimum of once per school term.
3. A road safety induction shall be completed for all staff and students, to ensure that all staff and students are appropriately educated about road safety. For students and staff present at the start of the school year, this can be completed as per action 1. However, for students and staff not present at the start of the school year or who join the school later in the school year, a separate induction shall be completed as a priority in their first week of attendance.
4. The school will keep a database of students arriving by public transport, including which bus they will typically catch and the time they will be arriving at school. It will be school policy that bus students contact the school if their travel arrangements change on any given day.
5. Any students arriving or departing by bus that are required to cross Foreman Road, must be escorted across Foreman Road by a staff member to ensure their safety. A staff member must be present on Foreman Road during the following times:
 - a) When any bus arrives on the opposite side of Foreman Road between 8:30am and 10am to help to escort students safely across Foreman Road. The staff member shall walk to the opposite side of Foreman Road prior to the arrival of any northbound bus to ensure students on this side of the road are supervised at all times.
 - b) From the finish of school each day until all students traveling by bus have been collected.The staff member shall be easily identifiable and shall be wearing a high-visibility vest or jacket.
6. The school shall not promote public buses as a desirable means of transport to and from school. This is at the request of Hamilton City Council.
7. The school will actively encourage students to car pool with other students. To facilitate this, the school will keep a car pool register of care-givers who are happy to assist others in getting

to and from school, and will use this register to facilitate the connection of families where car-pooling is a practical option.

8. All travel organised by the school (including charter buses) will arrive and depart from within the school site and must not involve students walking on or across Foreman Road.
9. The school will actively discourage walking and cycling to school by students for safety reasons.

The Travel Plan shall be reviewed and amended if necessary, at a minimum of once per year to reflect any changes in travel patterns of students, bus time tables and any lessons learnt from the School register of near-miss/accidents. The amended Travel Plan for the new school year will be submitted to the Hamilton City Council Transportation Manager in November of the preceding year. The school Travel Plan and evidence of compliance with it will also be submitted to the Hamilton City Council Transportation Manager within 48 hours upon written request at any time.

Appendix A

Bus Routes and Timetables

Monday to Friday					Nawton				
9	Transport Centre	Waimarie (Fraser High School)	Rotokauri Rd	Tasman Rd	Tasman Rd	Rotokauri Rd	Waimarie (Fraser High School)	Transport Centre	
	TC			T	T			TC	
	8 min		12 min	8 min	5 min	8 min	14 min		
	Depart	Arrive	Arrive	Arrive	Depart	Depart	Arrive	Arrive	
AM	Platform T					6.20	6.26	6.38	
						6.50	6.56	7.10	
	6.50	6.58	7.03	7.10	7.15	7.20	7.28	7.42	
	7.15	7.23	7.30	7.38	7.45	7.50	7.58	8.15	
	7.45	7.53	8.00	8.08	8.15	8.20	8.28	8.42	
	8.15	8.23	8.30	8.38	8.45	8.50	8.58	9.12	
	8.45	8.53	9.05	9.13	9.15	9.20	9.28	9.42	
	9.15	9.23	9.35	9.43	9.45	9.50	9.58	10.12	
	9.45	9.53	10.05	10.13	10.15	10.20	10.28	10.42	
	10.15	10.23	10.35	10.43	10.45	10.50	10.57	11.12	
	10.45	10.53	11.05	11.13	11.15	11.20	11.28	11.42	
	11.15	11.23	11.35	11.43	11.45	11.50	11.58	12.12	
PM	11.45	11.53	12.05	12.13	12.15	12.20	12.28	12.42	
	12.15	12.23	12.35	12.43	12.45	12.50	12.58	1.12	
	12.45	12.53	1.05	1.13	1.15	1.20	1.28	1.48	
	1.15	1.23	1.35	1.43	1.45	1.50	1.57	2.12	
	1.45	1.53	2.05	2.13	2.15	2.20	2.28	2.48	
	2.15	2.23	2.35	2.43	2.45	2.50	2.58	3.12	
	2.45	2.53	3.02	3.10	3.15	3.20	3.26	3.40	
	3.15	3.23	3.32	3.40	3.45	3.50	3.56	4.10	
	3.45	3.53	4.02	4.10	4.15	4.20	4.26	4.40	
	4.15	4.23	4.32	4.40	4.45	4.50	4.56	5.10	
	4.45	4.53	5.02	5.10	5.15	5.20	5.26	5.40	
	5.15	5.23	5.32	5.40	5.45	5.50	5.55	6.08	
	5.45	5.53	6.05			6.15	6.20	6.33	
	6.15	6.23	6.35			6.45	6.50	7.03	
	6.45	6.52	7.05			7.45	7.50	8.03	
	7.15	7.22	7.33			8.45	8.50	9.03	
	8.15	8.22	8.33						
	9.15	9.22	9.33						

Times in **BOLD** are scheduled. All other times are approximate.

Times highlighted in blue depart/arrive at Tasman Road outside Mainfreight. All other times depart/arrive outside 27 Rotokauri Road. All passengers wanting to travel to Wintec Rotokauri outside times in blue need to transfer to the Orbiter on Ellicott Road or Avalon Drive.

Accessible buses



Buses on this service are wheelchair friendly. Wheelchairs must be under 250kg in weight and 80cm in width to travel on the bus. The operator always aims to operate accessible buses, however there may be times when this is not possible due to operational reasons.



Monday to Friday								
Orbiter clockwise								
	The Base	Flagstaff	Rototuna	Chartwell	University	Hospital	Dinsdale	Wintec Rotokauri
	1							1
	Depart							Arrive
							6.15	6.24
					6.20	6.15	6.25	6.35
				6.20	6.32	6.30	6.40	6.50
				6.43	6.47	6.44	6.54	7.04
	6.15	6.22	6.26	6.33	6.47	6.59	7.09	7.19
	6.30	6.37	6.41	6.48	7.02	7.14	7.24	7.34
	6.45	6.52	6.56	7.03	7.17	7.30	7.41	7.52
					7.30	7.44	7.55	8.07
	7.00	7.09	7.15	7.23	7.43	7.58	8.10	8.22
	7.15	7.24	7.30	7.38	7.58	8.13	8.25	8.37
	Depart Church Rd							
	7.25	7.35	7.41	7.50	8.10	8.25		
	7.30	7.39	7.45	7.53	8.13	8.28	8.40	8.52
					8.20	8.35		
	7.45	7.54	8.00	8.08	8.28	8.43	8.55	9.07
	Depart Church Rd							
	7.45	7.55	8.03	8.15	-	8.35		
	8.05	8.14	8.20	8.28	8.50	9.05	9.15	9.25
	8.20	8.29	8.35	8.43	9.05	9.20	9.30	9.40
	8.40	8.48	8.53	9.00	9.20	9.35	9.45	9.55
	9.00	9.08	9.13	9.20	9.40	9.55	10.05	10.15
	9.22	9.30	9.35	9.42	10.02	10.17	10.27	10.37
	9.45	9.53	9.58	10.05	10.25	10.40	10.50	11.00
	10.07	10.15	10.20	10.27	10.47	11.02	11.12	11.22
	10.30	10.38	10.43	10.50	11.10	11.25	11.35	11.45
	10.52	11.00	11.05	11.12	11.32	11.47	11.57	12.07
	11.15	11.23	11.28	11.35	11.55	12.10	12.20	12.30
	11.37	11.45	11.50	11.57	12.17	12.32	12.42	12.52
	12.00	12.08	12.13	12.20	12.40	12.55	1.05	1.15
	12.22	12.30	12.35	12.42	1.02	1.17	1.27	1.37
	12.45	12.53	12.58	1.05	1.25	1.40	1.50	2.00
	1.07	1.15	1.20	1.27	1.47	2.02	2.12	2.22
	1.30	1.38	1.43	1.50	2.12	2.27	2.37	2.47
	1.52	2.00	2.05	2.13	2.36	2.51	3.02	3.13
	2.15	2.23	2.30	2.37	3.00	3.15	3.27	3.39
	2.37	2.45	2.52	2.59	3.22	3.37	3.49	4.01
					Depart HBHS			
				3.15	-	3.41	3.56	4.10
	3.00	3.08	3.15	3.22	3.45	4.00	4.12	4.24
	3.20	3.28	3.35	3.42	4.05	4.20	4.32	4.44
	3.40	3.48	3.55	4.02	4.25	4.40	4.52	5.04
	4.00	4.08	4.15	4.22	4.45	5.00	5.12	5.24
	4.20	4.28	4.35	4.42	5.05	5.20	5.32	5.44
	4.40	4.48	4.55	5.02	5.25	5.40	5.52	6.04
	5.00	5.08	5.15	5.22	5.45	6.00	6.12	6.24
	5.20	5.27	5.33	5.40	6.02	6.15	6.25	6.35
	5.40	5.47	5.52	5.59	6.18	6.30	6.40	6.50
	6.00	6.07	6.12	6.19	6.38	6.50	7.00	7.10
	6.20	6.27	6.31	6.38	6.53	7.05	7.13	7.23
	6.40	6.47	6.51	6.58	7.12	7.24	7.32	7.42
	7.05	7.12	7.16	7.23	7.37	7.49	7.57	8.07
	7.30	7.37	7.41	7.48	8.00	8.12	8.20	8.30
	7.55	8.02	8.06	8.13	8.25	8.37	8.45	8.55
	8.30	8.37	8.41	8.48	9.00	9.12	9.20	9.28
	9.10	9.17	9.21	9.28	9.40			

Key: HBHS Hamilton Boys' High School | SHGC: Sacred Heart Girls' College ➡ school term only

* Last run of the day terminates at the university

This timetable lists all times for the key stops along the clockwise route.

All routes and timetables are dependent on traffic flow and may vary.

Accessible buses



Buses on this service are wheelchair friendly. Wheelchairs must be under 250kg in weight and 80cm in width to travel on the bus. The operator always aims to operate accessible buses, however there may be times when this is not possible due to operational reasons.

Monday to Friday									
Orbiter anti-clockwise									
The Base	Wintec Rotokauri	Dinedale	Hospital	University	Chartwell	Rototuna	Flagstaff	The Base	
1								1	
Depart					Arrive				
				6.10	6.10	6.14	6.18	6.30	
				6.23	6.23	6.27	6.31	6.43	
				6.36	6.36	6.41	6.46	6.58	
		6.15	6.25	6.37	6.51	6.56	7.01	7.13	
6.15	6.20	6.29	6.40	6.52	7.05	7.11	7.16	7.28	
6.30	6.35	6.44	6.55	7.07	7.21	7.26	7.31	7.43	
6.45	6.50	6.59	7.12	7.24	7.38	7.43	7.48	8.02	
				7.35	7.51	7.57	8.02	8.18	
7.00	7.06	7.18	7.32	7.47	8.05	8.11	8.17	8.35	
7.15	7.21	7.33	7.47	8.02	8.20	8.26	8.32	8.50	
Depart: Turners, Avalon Dr					Arrive HBHS				
	7.33	7.45	7.57	8.12	8.20				
7.30	7.36	7.48	8.02	8.17	8.35	8.41	8.47	9.04	
7.45	7.51	8.03	8.17	8.32	8.50	8.56	9.02	9.17	
8.05	8.11	8.23	8.37	8.52	9.10	9.16	9.22	9.37	
8.20	8.26	8.38	8.52	9.07	9.25	9.31	9.37	9.52	
8.40	8.46	8.58	9.11	9.25	9.42	9.48	9.54	10.07	
9.00	9.06	9.18	9.31	9.45	10.02	10.08	10.14	10.27	
9.22	9.28	9.40	9.53	10.07	10.24	10.30	10.36	10.49	
9.45	9.51	10.03	10.16	10.30	10.47	10.53	10.59	11.12	
10.07	10.13	10.25	10.38	10.52	11.09	11.15	11.21	11.34	
10.30	10.36	10.48	11.01	11.15	11.32	11.38	11.44	11.57	
10.52	10.58	11.10	11.23	11.37	11.54	12.00	12.06	12.19	
11.15	11.21	11.33	11.46	12.00	12.17	12.23	12.29	12.42	
11.37	11.43	11.55	12.08	12.22	12.39	12.45	12.51	1.04	
12.00	12.06	12.18	12.31	12.45	1.02	1.08	1.14	1.27	
12.22	12.28	12.40	12.53	1.07	1.24	1.30	1.36	1.49	
12.45	12.51	1.03	1.16	1.30	1.47	1.53	1.59	2.12	
1.07	1.13	1.25	1.38	1.52	2.09	2.15	2.21	2.34	
				2.05	2.23	2.30	2.37	2.54	
1.30	1.36	1.48	2.02	2.18	2.35	2.43	2.50	3.07	
1.52	1.58	2.10	2.24	2.40	2.58	3.05	3.12	3.29	
2.15	2.21	2.33	2.47	3.03	3.21	3.28	3.35	3.52	
			Dep HBHS	3.20**	3.40**	3.47**	3.55**	4.13**	Arrives Church Rd
			Dep HBHS	3.20**	3.40**	3.47**	3.55**	4.13**	Arrives The Base
		Depart SHGC	3.20	-	3.43	3.50	3.57	4.15	
		Depart Uni	3.20	3.43	3.50	3.57	4.15		
		Depart SHGC	3.20	3.25	3.48	3.55	4.02	4.20	
2.37	2.43	2.55	3.09	3.25	3.43	3.50	3.57	4.14	
3.00	3.06	3.18	3.32	3.48	4.06	4.13	4.20	4.37	
3.20	3.26	3.38	3.52	4.09	4.26	4.33	4.40	4.57	
3.40	3.46	3.58	4.12	4.28	4.46	4.53	5.00	5.17	
4.00	4.06	4.18	4.32	4.48	5.06	5.13	5.20	5.37	
4.20	4.26	4.38	4.52	5.09	5.26	5.33	5.40	5.57	
4.40	4.46	4.58	5.12	5.28	5.46	5.53	6.00	6.17	
5.00	5.06	5.18	5.32	5.48	6.06	6.13	6.20	6.37	
5.20	5.26	5.38	5.49	6.04	6.20	6.26	6.33	6.48	
5.40	5.46	5.55	6.07	6.20	6.35	6.41	6.48	7.02	
6.00	6.06	6.15	6.27	6.40	6.55	7.01	7.08	7.22	
6.20	6.26	6.34	6.44	6.57	7.11	7.15	7.20	7.33	
6.40	6.46	6.54	7.04	7.16	7.30	7.34	7.39	7.52	
7.05	7.10	7.19	7.29	7.41	7.55	7.59	8.04	8.17	
7.30	7.35	7.44	7.54	8.04	8.18	8.22	8.27	8.40	
7.55	8.00	8.09	8.19	8.29	8.43	8.47	8.52	9.05	
8.30	8.35	8.44	8.54	9.04	9.18	9.22	9.27	9.37	
9.10*	9.15*	9.24*	9.34*	9.44*					Terminates University

Key: HBHS: Hamilton Boys' High School | SHGC: Sacred Heart Girls' College ➡ school term only

* Last run of the day terminates at the university

** On Thursdays during school terms this run operates an hour early, leaving HBHS at 2.20pm due to the school's early Thursday finish.

This timetable lists all times for the key stops along the anti-clockwise route.

Accessible buses



Buses on this service are wheelchair friendly. Wheelchairs must be under 250kg in weight and 80cm in width to travel on the bus. The operator always aims to operate accessible buses, however there may be times when this is not possible due to operational reasons.

